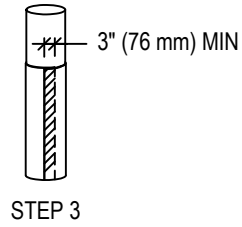
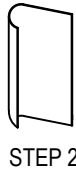
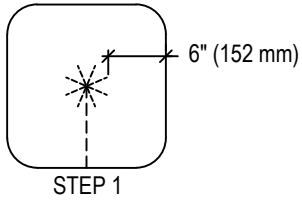
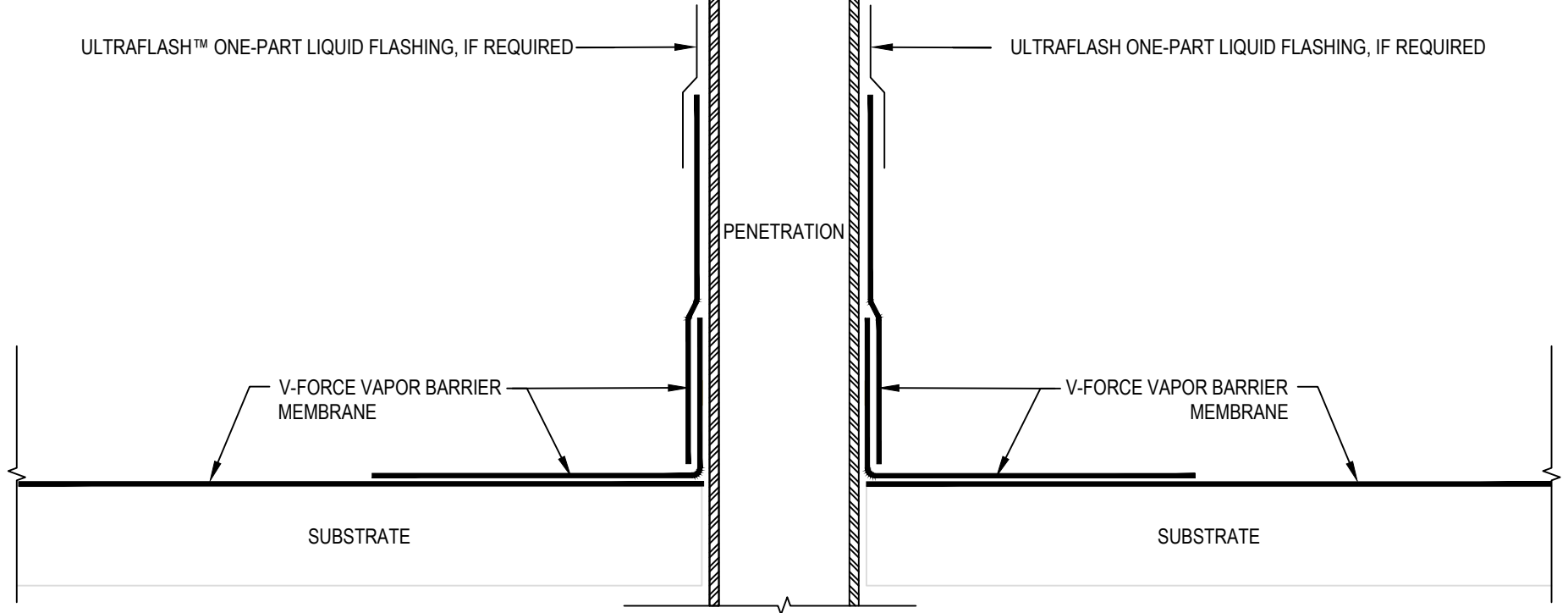


WRAP PIPE WITH V-FORCE



NOTES:

1. REFER TO FIRESTONE WEBSITE FOR MOST CURRENT INFORMATION.
2. CAREFULLY FOLLOW ALL APPLICATION INSTRUCTIONS REGARDING NECESSITY OF PRIMER, LAP WIDTHS, ETC.
3. V-FORCE MUST BE ROLLED IN WITH A WEIGHTED ROLLER. A HAND ROLLER MAY BE USED ON FLASHINGS.
4. IF WATERTIGHT FLASHINGS ARE REQUIRED, TERMINATE WITH ULTRAFLASH ONE-PART LIQUID FLASHING, USING A BASE COAT, FLEECE LAYER, EMBEDMENT COAT, AND TOP COAT (EACH COAT MUST HAVE A 30 MIL WET THICKNESS). FOLLOW ULTRA-FLASH APPLICATION GUIDELINES.
5. DO NOT INSTALL V-FORCE UP VERTICAL SURFACES BEYOND THE FINAL INSULATION HEIGHT.



MAXIMUM WARRANTY: **N/A**

Firestone
BUILDING PRODUCTS
NOBODY COVERS YOU BETTER.™
 www.firestonebpco.com

V-FORCE™ PENETRATION

ASPHALT SYSTEMS ACCEPTABLE SYSTEMS: **ALL**

ISSUE/REVISION DATE:
 10/26/2017
 NOT TO SCALE

DETAIL NO.
VF-P-1