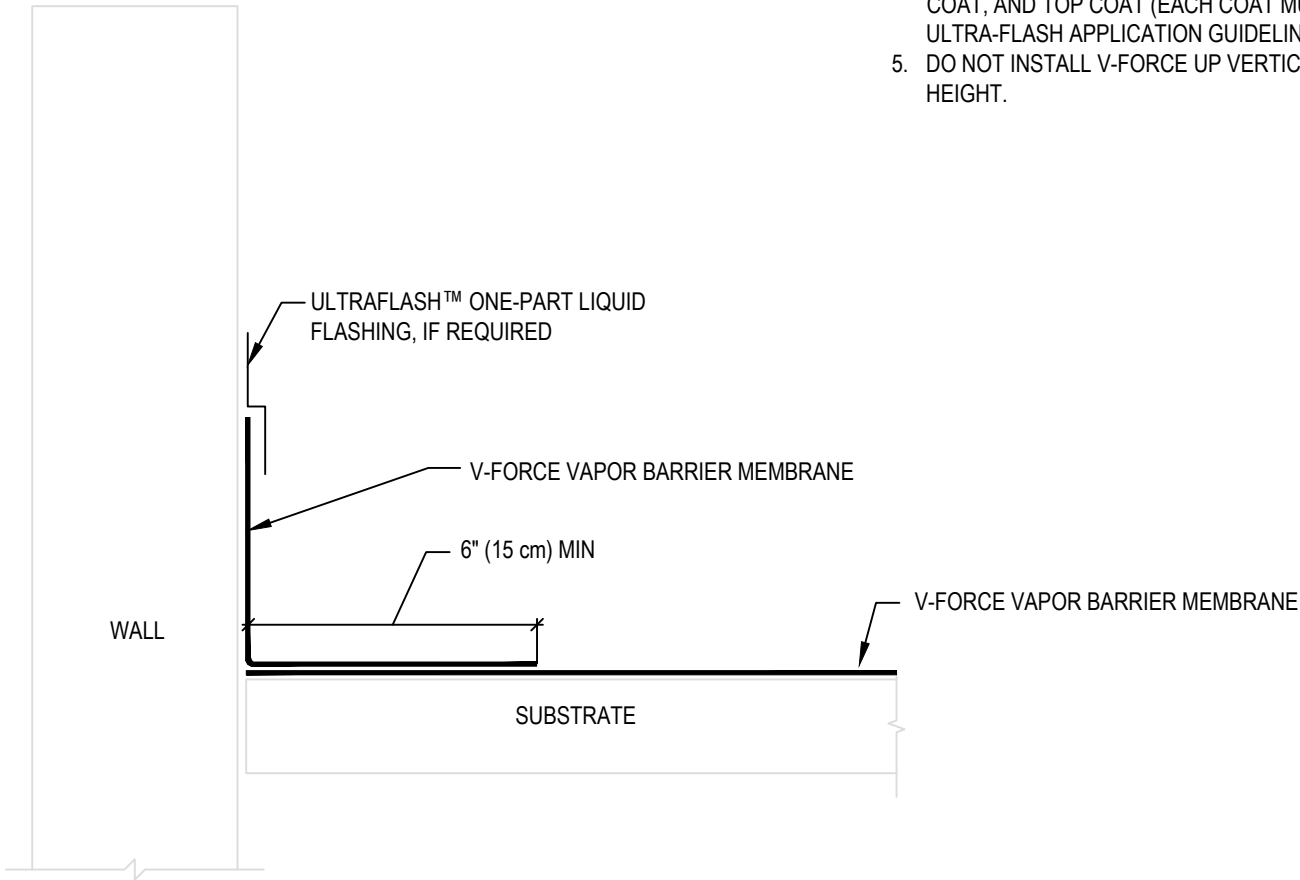


NOTES:

1. REFER TO FIRESTONE WEBSITE FOR MOST CURRENT INFORMATION.
2. CAREFULLY FOLLOW ALL APPLICATION INSTRUCTIONS REGARDING NECESSITY OF PRIMER, LAP WIDTHS, ETC.
3. V-FORCE MUST BE ROLLED IN WITH A WEIGHTED ROLLER. A HAND ROLLER MAY BE USED ON FLASHINGS.
4. IF WATERTIGHT FLASHINGS ARE REQUIRED, TERMINATE WITH ULTRAFLASH™ ONE-PART LIQUID FLASHING, USING A BASE COAT, FLEECE LAYER, EMBEDMENT COAT, AND TOP COAT (EACH COAT MUST HAVE A 30 MIL WET THICKNESS). FOLLOW ULTRA-FLASH APPLICATION GUIDELINES.
5. DO NOT INSTALL V-FORCE UP VERTICAL SURFACES BEYOND THE FINAL INSULATION HEIGHT.



MAXIMUM WARRANTY: **N/A**

**Firestone**  
 BUILDING PRODUCTS  
 NOBODY COVERS YOU BETTER.™  
 www.firestonebpco.com

**V-FORCE™ BASE TIE-IN**

**ASPHALT SYSTEMS**

ACCEPTABLE SYSTEMS: **ALL**

ISSUE/REVISION  
 DATE:  
 10/26/2017

NOT TO SCALE

DETAIL NO.  
**VF-BT-1**