

Plaza Pavers

Item Description

Concrete Plaza Paver



Product Information

Description:

Firestone Plaza Pavers combine long-lasting durability with an elegant look to enhance all rooftop amenity spaces. Firestone Plaza Pavers can be installed on a sloped system, providing a paver surface conforming to the slope of the roof, or a level system, utilizing Firestone ScrewJack Adjustable Pedestals to create a level surface.

Method of Application:

1. Ensure related work penetrating the plane of the roof is completed (i.e. roof membrane).
2. Firestone Plaza Pavers should be smooth, sound, clean, and free of irregularities.
3. Clean and prepare deck in accordance with manufacturer's instructions.
4. Verify deck dimensions, elevations and pedestal heights before commencing work.
5. Establish visual pattern with accurate lines and levels.
6. Starting point will be largely dependent on where less than full size pavers are to be used.
7. If a partial paver at perimeter is necessary, begin installation of full pavers at the second row in the roof field.
8. Mark perpendicular guidelines on substrate surface to ensure square layout.
9. Establish a grid pattern for the pedestals using chalk lines. Place ScrewJack at the grid line intersections. Use a laser leveling device or a mason's line stretched from opposite sides to select the correct model of ScrewJack Adjustable Pedestal.
10. Install initial pavers along guidelines forming a "T" pattern.
11. Install Plaza Pavers against spacing ribs of pedestal.
12. Fine tune adjustments to the paver surface can be made by using the pedestal shims.
13. Any section of the roof that receives plaza pavers that is not restrained by an abutting wall or parapet must be "boxed in" by some field installed restraint. No movement should be allowed at the perimeter of the paver system greater than 3/16".

Cleaning:

- During the course of the work and on completion, remove any cut dust from the surface of the pavers by means of high-pressure water or air; cut dust can and will discolor pavers if left unattended. Extreme care should be taken when using high-pressure water to avoid potential damage when used in a concentrated area.
- Concrete cleaning agents can be used as long as they are approved by the membrane manufacturer. Firestone assumes no responsibility for damage caused to the pavers or membrane as a result of cleaners used.
- Clean surface of paver using a broom or brush.
- Once cleaned, rinse pavers completely to avoid staining. If rinse water is allowed to pool on pavers, secondary efflorescence can occur.
- A concrete sealer may be applied, but is not required.

Plaza Pavers

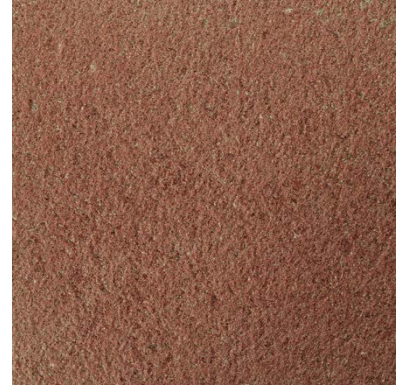
Plaza Paver - Description



Natural, Diamond Finish
W56RACPV02



Natural Gray, Shot Blast Finish
W56RACPV03



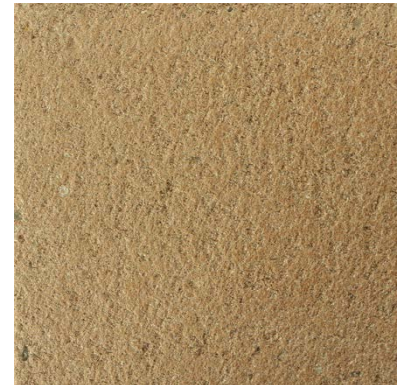
Red, Shot Blast Finish
W56RACPV04



Brown, Shot Blast Finish
W56RACPV05



Charcoal, Shot Blast Finish
W56RACPV06



Ginger, Shot Blast Finish
W56RACPV07



Tan, Shot Blast Finish
W56RACPV08



White SRI Rated Matte Finish
W56RACPV09



White SRI Rated Shot Blast Finish
W56RACPV10

TECHNICAL INFORMATION SHEET

Plaza Pavers

Storage:

- Store material in original unopened packaging in a dry area away from sources of physical damage.
- Store materials on raised platforms.
- Properly handle materials to prevent damage.
- Do not exceed the structural capacity of deck if placing Firestone Plaza Paver units on the roof.
- Protect membrane and installed areas of the Firestone Plaza Paver from damage when transporting pallets of Firestone Plaza Paver or other material. Recommend to place plywood sheets in traffic path or use carts with pneumatic tires.

Precautions:

- Do not use de-icing agents including but not limited to ammonium nitrate, ammonium sulfate, sodium chloride (salt), and calcium chloride; these agents are destructive to Plaza Pavers.
- A registered professional engineer, at the request and expense of the owner or architect, shall evaluate the roof structure to ensure it can receive the weight of the Firestone Plaza Paver.
- After cleaning, if rinse water is allowed to pool on pavers, secondary efflorescence can occur.

LEED® Information:

Post Consumer Recycled Content: 0%

Post Industrial Recycled Content: 0%

Manufacturing Locations: Abbotsford, BC, Auburn, IN, Brooklin, ON, Easton, PA.

*NOTE: LEED® is a registered trademark of the U.S. Green Building Council.

Typical Properties

Property	Value	Test Method
Size	24" x 24" x 1-13/16" (61.1 cm x 61.1 cm x 4.6 cm)	
Weight	24 lb/ft ²	
Dimensional Tolerance	± 1/16" (length, width, height, convex, concave)	
Compressive Strength	8000 psi	ASTM C140
Water Absorption	5% Max	ASTM C140
Flexural Strength	725 psi	ASTM C293
Freeze Thaw	1% loss of dry weight	ASTM C67

Shipping Information

Individual Weight: 96 lb	Pallet Quantity: 24	Pallet Weight: d 2400 lb
--------------------------	---------------------	--------------------------

Please contact Quality Building Services Technical Department at 1-800-428-4511 for further information.

This sheet is meant to highlight Firestone products and specifications and is subject to change without notice. Firestone takes responsibility for furnishing quality materials which meet published Firestone product specifications or other technical documents, subject to normal roof manufacturing tolerances. Neither Firestone nor its representatives practice architecture. Firestone offers no opinion on and expressly disclaims any responsibility for the soundness of any structure. Firestone accepts no liability for structural failure or resultant damages. Consult a competent structural engineer prior to installation if the structural soundness or structural ability to properly support a planned installation is in question. No Firestone representative is authorized to vary this disclaimer.