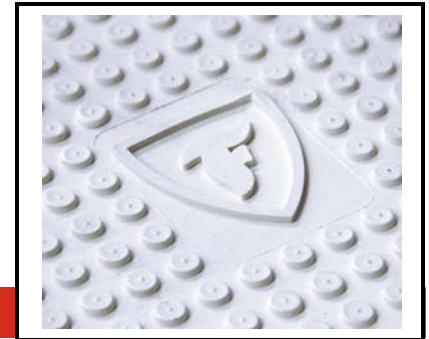


EcoWhite™ QuickSeam™ Walkway Pad



Item Description

White Walkway Pad

Item Number

W56RAC186W

Product Information

Description:

EcoWhite QuickSeam Walkway Pads are high quality rubber walkway pads with QuickSeam Tape factory laminated to the bottom. The QuickSeam Tape secures the walkway pads to the primed RubberGard™ EcoWhite EPDM membrane.

EcoWhite QuickSeam Walkway Pads help protect the membrane from damage due to necessary rooftop service traffic. The material exhibits excellent levels of hardness, tensile strength, wear and tear resistance, and displays excellent cold flexibility.

The owner is responsible for maintaining walkways in specific areas:

- At all access points (ladders, hatches, doorways, etc.) to the roof.
- Around all mechanical equipment which will require maintenance.
- As a walkway system on roofs subjected to traffic more frequently than once per month.

Method of Application:

1. Position the EcoWhite QuickSeam Walkway pads so that the flat surface is over the completed RubberGard EcoWhite EPDM membrane, spacing each pad a minimum of 1" (25.4 mm) and a maximum 6" (152.4 mm) from each other to allow for drainage.
2. If EcoWhite QuickSeam Walkway Pads are installed over field fabricated seams or within 3" (76.2 mm) of a lap edge and cannot be avoided, the seam must be stripped in using 6" (152.4 mm) EcoWhite QuickSeam Flashing.
3. EcoWhite 6" QuickSeam Flashing must extend beyond the walkway pad a minimum of 6" (152.4 mm) past each side of the pad.
4. Use Single-Ply QuickPrime™ or Single-Ply LVOC Primer applied using a QuickScrubber™ or QuickScrubber Plus pad and handle to clean and prime the RubberGard EcoWhite membrane to receive the tape portions of the walkway pad.
5. Allow primer to dry according to the touch-push test.
6. Remove the release paper on the tape and place the taped walkway pad into place on the primed membrane.
7. Walk on the pad to assure proper overall adhesion.

Storage:

- Store in original unopened containers indoors at temperatures between 60 °F (15.6 °C) and 80 °F (26.7 °C).
- Do not store on roof in direct sunlight or at temperatures above 80 °F (26.7 °C).
- When exposed to lower temperatures; restore to room temperature prior to use.
- Shelf life of one year can be expected when stored in original container at temperatures between 60 °F (15.6 °C) and 80 °F (26.7 °C).
- Shelf life will be shortened if exposed to elevated temperatures.

Precautions:

- Refer to Safety Data Sheet (SDS).
- Do not expose to open flame or ignition source.
- Keep Walkway Pads dry during storage.

TECHNICAL INFORMATION SHEET

EcoWhite™ QuickSeam™ Walkway Pad

LEED® Information:

Post Consumer Recycled Content: 0%
 Post Industrial Recycled Content: 0%
 Manufacturing Location: Guelph, ON – Canada
 *NOTE: LEED® is a registered trademark of the U.S. Green Building Council.

Compliance:	Test Method	Result
Solar Reflectance Index (SRI)***:	ASTM E1980	72

***SRI was calculated using the SRI calculator from the USGBC.

Packaging:

- 50 units per pallet
- 445 lb/pallet (201.9 kg/pallet)

Typical Properties – Walkway Pad

Property	Test Method	Minimum Performance
Base :	---	Rubber Polymers
Color:	---	White
Elongation, % min.:	D412, Die C	
Parallel to grain flow:	---	75
Perpendicular to grain flow:	---	75
Brittleness Temperature:	D2137	40 °F (-40 °C)
Hardness, Shore A:	D2240	60 ± 5

Product Data – QuickSeam Tape

Property	Value
Base	Rubber Polymers
Color	Black
Solvents	None
Solids	100%
Cured State	Cured
Thickness	.030" (0.77 mm) ± 0.005" (0.127 mm)

NOTE:

- Pad size is 30" x 30" x .300" thick (762 mm x 762 mm x 7.62 mm)
- QuickSeam Tape is factory laminated to Walkway Pads: 3 rows of 3" (76.2 mm) wide tape, or two rows of 7" (177.8 mm) wide tape.

Please contact Quality Building Services Technical Department at 1-800-428-4511 for further information.

This sheet is meant to highlight Firestone products and specifications and is subject to change without notice. Firestone takes responsibility for furnishing quality materials which meet published Firestone product specifications or other technical documents, subject to normal roof manufacturing tolerances. Neither Firestone nor its representatives practice architecture. Firestone offers no opinion on and expressly disclaims any responsibility for the soundness of any structure. Firestone accepts no liability for structural failure or resultant damages. Consult a competent structural engineer prior to installation if the structural soundness or structural ability to properly support a planned installation is in question. No Firestone representative is authorized to vary this disclaimer.