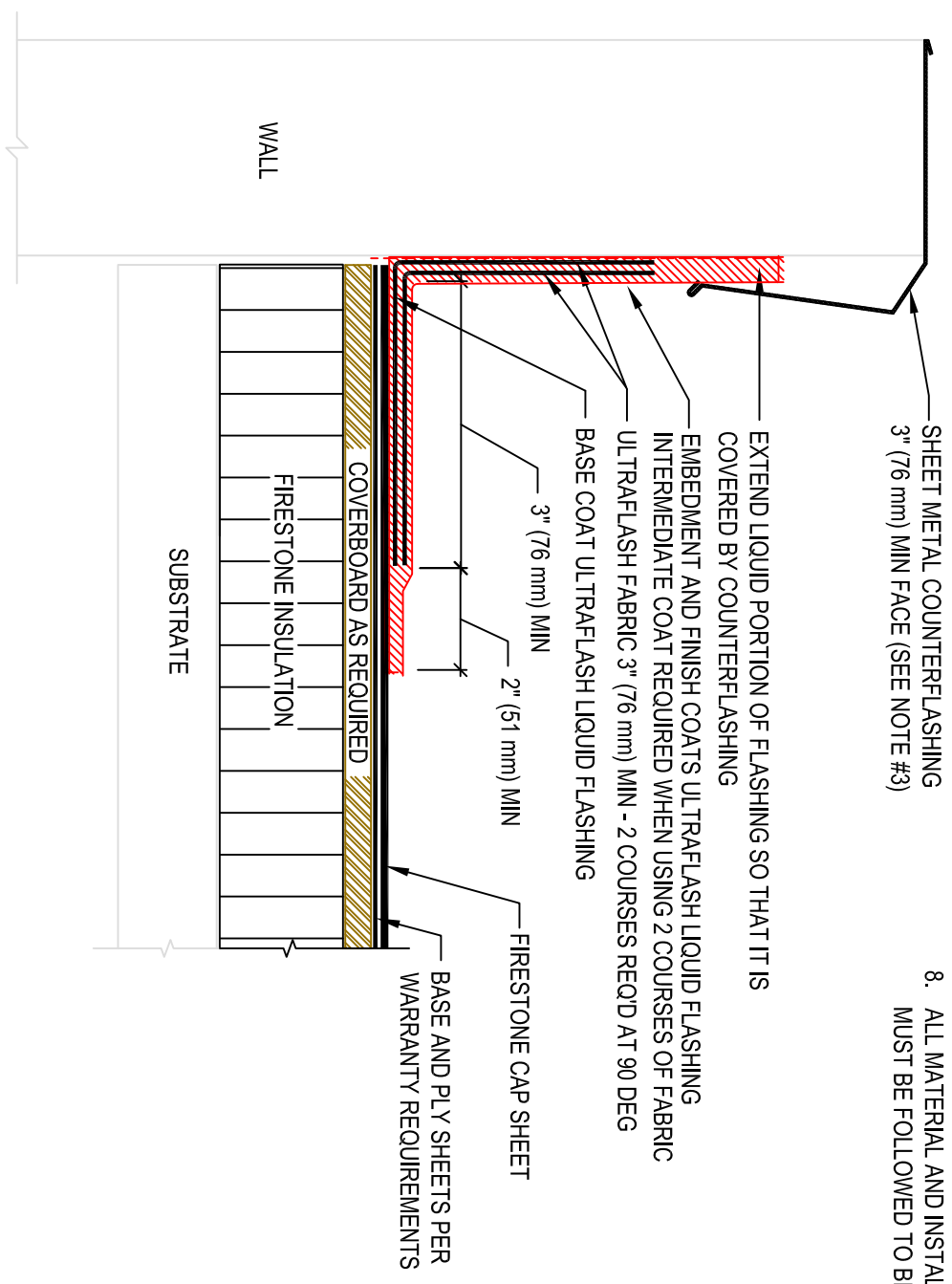
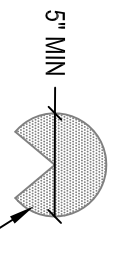


- NOTES:
1. REFER TO FIRESTONE WEBSITE FOR MOST CURRENT INFORMATION.
  2. THIS DETAIL SHOULD BE USED ONLY WHERE THE DECK IS SUPPORTED BY THE OUTSIDE WALL.
  3. ALL SHEET METAL IS TO BE INSTALLED PER SMACNA GUIDELINES.
  4. FOR OPTIMAL RESULTS, EMBED GRANULES ON CAP SHEET PRIOR TO APPLYING ULTRAFASH LIQUID FLASHING.



5. BOTH ULTRAFASH ONE-PART AND TWO-PART LIQUID FLASHING SHOULD BE APPLIED WITH A BOTTOM COAT, EMBEDMENT COAT, AND FINISH COAT OF 30 MILS WET THICKNESS EACH.
6. ULTRAFASH ONE-PART LIQUID FLASHING MAY BE USED ON SBS, APP. OR BUR SYSTEMS (UP TO 20-YR WARRANTY); ULTRAFASH TWO-PART LIQUID FLASHING MAY ONLY BE USED ON SBS SYSTEMS (UP TO 30-YR WARRANTY).
7. WHEN USING ULTRAFASH TWO-PART LIQUID FLASHING, APPLY ULTRAFASH LVOC PRIMER TO ALL NON-POROUS SURFACES.
8. ALL MATERIAL AND INSTALLATION REQUIREMENTS FOR SBS PLATINUM WARRANTY MUST BE FOLLOWED TO BE ELIGIBLE FOR 30 YEAR PLATINUM WARRANTY.



NOTCHED PATCH REQUIRED AT ALL CORNERS

MAXIMUM WARRANTY: **30 YEARS**

**ULTRAFASH™ BASE FLASHING FOR WALL-SUPPORTED DECK**

ASPHALT SYSTEMS

ACCEPTABLE SYSTEMS: MODIFIED BITUMEN

ISSUE/REVISION DATE:

06/08/2016

DETAIL NO.

**MB-BT-19**