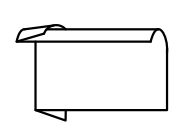
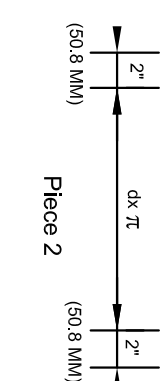
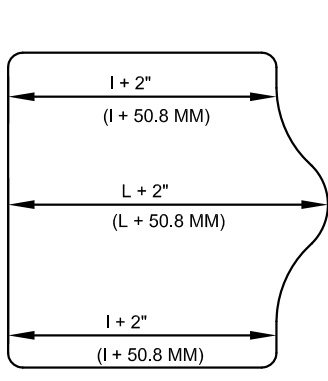
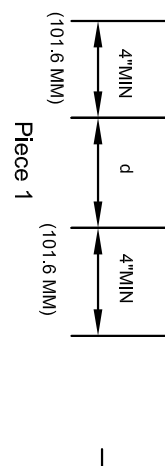
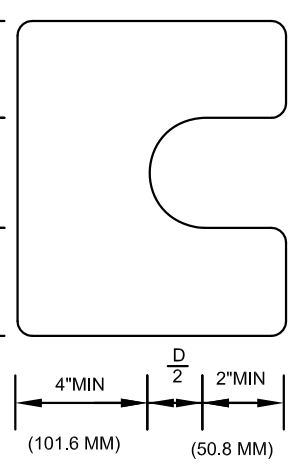
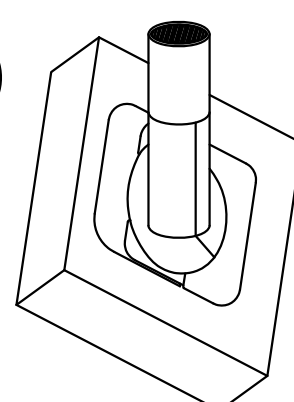
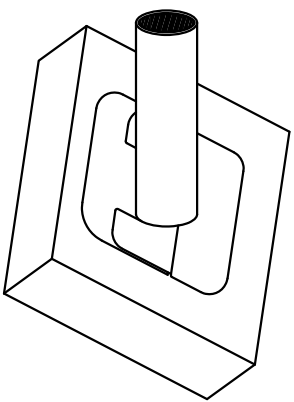
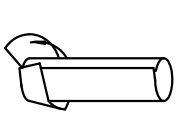


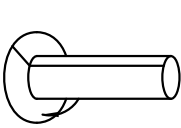
- Notes:
1. Pipe must be firmly anchored
 2. Make a circular cut about the inside diameter of the pipe.
 3. Pull the Firestone GeoGard over the pipe.
 4. Pipe and Firestone GeoGard are flashed with FormFlash
 5. The area to covered with the FormFlash is clean and Firestone Splice Adhesive (SA-1065) is applied with a solvent resistant brush per Firestone instructions.
 6. The FormFlash is applied per this detail and rolled with approved roller.



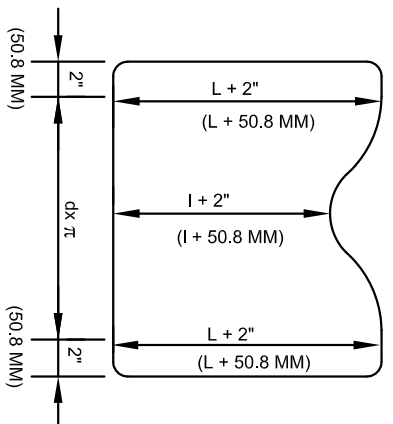
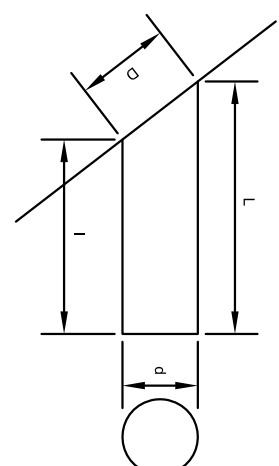
Step 1



Step 2



Step 3



3. After applying the adhesive to the pipe and overlap area of installed FormFlash, apply piece(s) 2 around the pipe and work flashing onto the installed FormFlash avoiding any bridging between the pipe and FormFlash. Finish by rolling the entire area with an approved roller.
4. Firestone Splice Adhesive is required where ever the FormFlash overlaps another surface.
5. Firestone Seam Edge Treatment is required on all seam edges of the FormFlash (Detail S-3).
6. Install a stainless steel clamp around the pipe as shown in Detail P-2.

LARGE PIPE PENETRATION



GEOGARD™

ACCEPTABLE SYSTEMS:
EPDM, EPDM-R, ECOWHITE EPDM

MAXIMUM WARRANTY: **N/A**

DETAIL NO. **P-3**

ISSUE / REVISION
DATE:
7-28-2015

NOT TO SCALE