

NOTES:

1. REFER TO FIRESTONE WEBSITE FOR MOST CURRENT INFORMATION.
2. FOR OPTIMAL RESULTS, EMBED GRANULES ON CAP SHEET PRIOR TO APPLYING ULTRAFFLASH LIQUID FLASHING.

ULTRAFFLASH TWO-PART LIQUID FLASHING (ULTRAFFLASH ONE-PART LIQUID FLASHING IS NOT SUITABLE FOR USE IN PENETRATION POCKETS). MIN 2" (51 mm) COVERAGE AROUND PENETRATIONS)

4" (101 mm) MINIMUM FLANGE SET IN FIRESTONE ULTRAFFLASH LIQUID FLASHING OVER FIELD PILES

EMBEDMENT AND FINISH COATS
ULTRAFFLASH LIQUID FLASHING

BASE COAT ULTRAFFLASH LIQUID FLASHING
FIRESTONE CAP SHEET

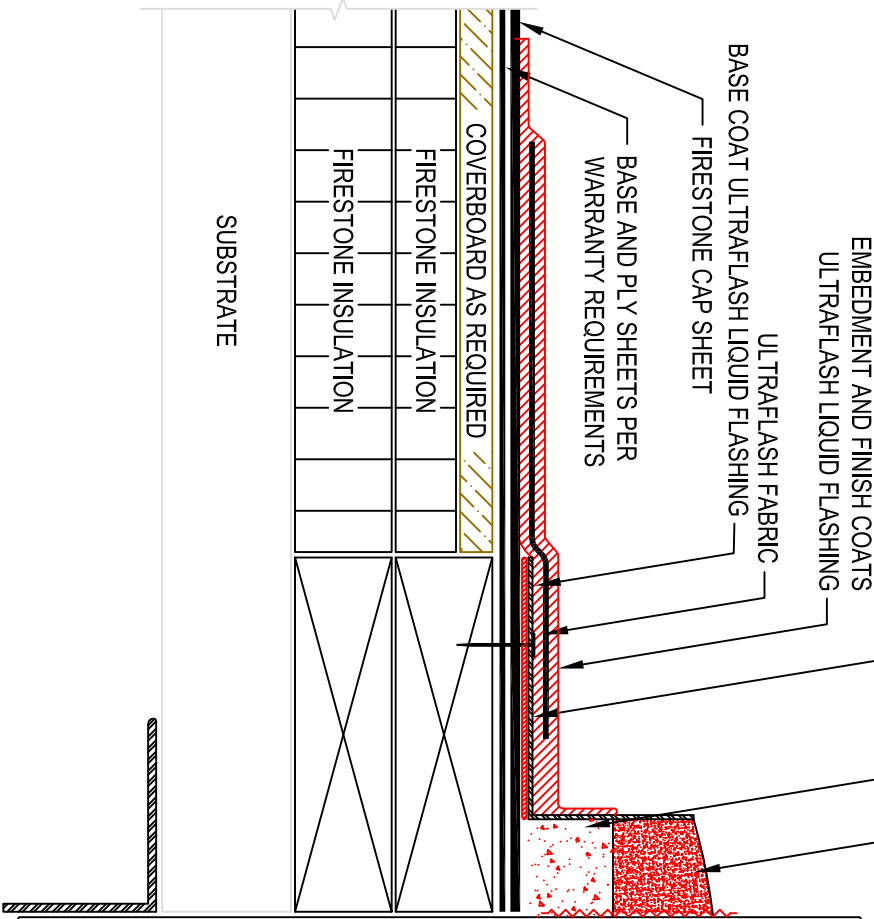
BASE AND PLY SHEETS PER
WARRANTY REQUIREMENTS

COVERBOARD AS REQUIRED

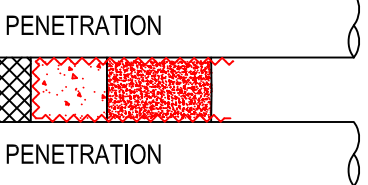
FIRESTONE INSULATION

FIRESTONE INSULATION

SUBSTRATE



3. WOOD NAILERS MUST BE INSTALLED WITH SUITABLE FASTENERS TO MEET APPLICABLE BUILDING CODES (200 LBS PER LINEAR FOOT MIN IN ANY GIVEN DIRECTION).
4. BOTH ULTRAFFLASH ONE-PART AND TWO-PART LIQUID FLASHING SHOULD BE APPLIED WITH A BOTTOM COAT, EMBEDMENT COAT, AND FINISH COAT OF 30 MILS WET THICKNESS EACH.
5. ULTRAFFLASH ONE-PART LIQUID FLASHING MAY BE USED ON SBS, APP, OR BUR SYSTEMS (UP TO 20-YR WARRANTY). ULTRAFFLASH TWO-PART LIQUID FLASHING MAY ONLY BE USED ON SBS SYSTEMS (UP TO 30-YR WARRANTY).
6. WHEN USING ULTRAFFLASH TWO-PART LIQUID FLASHING, APPLY ULTRAFFLASH LVOC PRIMER TO ALL NON-POROUS SURFACES.
7. ALL MATERIAL AND INSTALLATION REQUIREMENTS FOR SBS PLATINUM WARRANTY MUST BE FOLLOWED TO BE ELIGIBLE FOR 30 YEAR PLATINUM WARRANTY.



SHEET METAL PITCH PAN,
SOLDERED/WELDED WATERTIGHT
3 LAYERS ULTRAFFLASH
LIQUID FLASHING

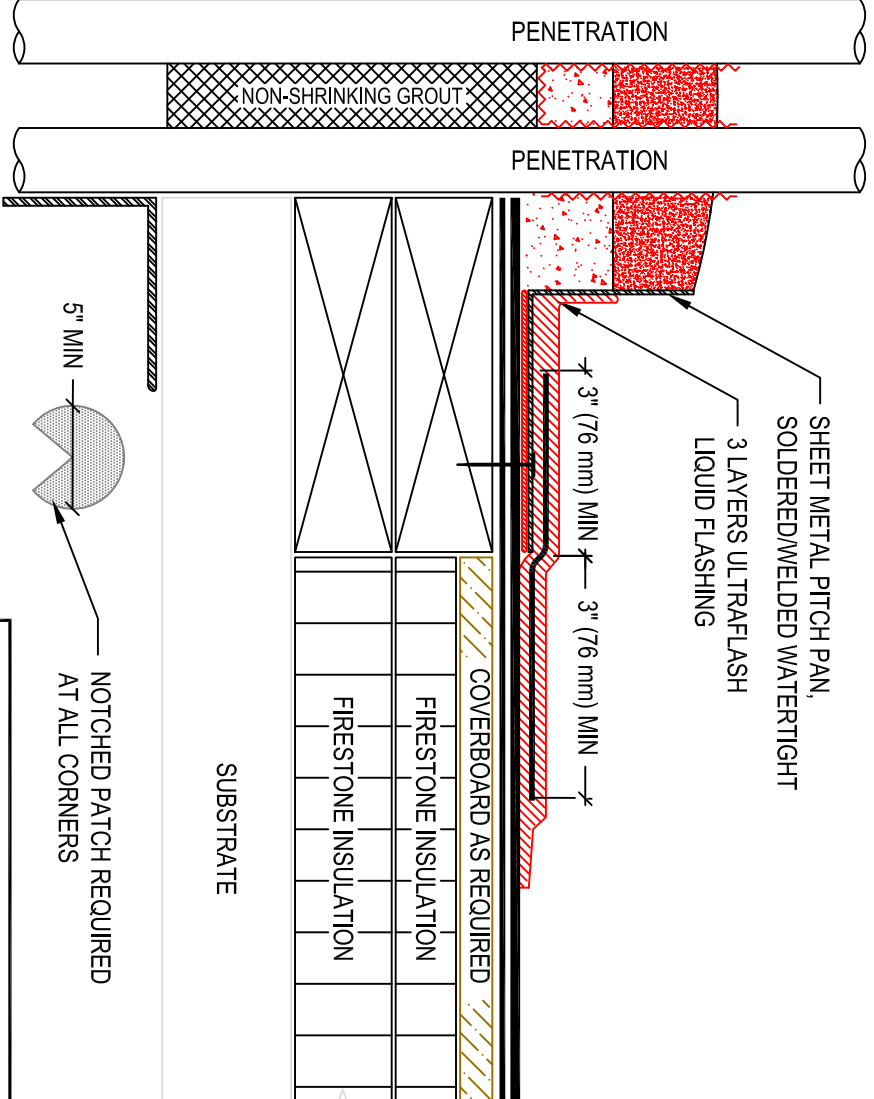
3" (76 mm) MIN 3" (76 mm) MIN

COVERBOARD AS REQUIRED

FIRESTONE INSULATION

FIRESTONE INSULATION

SUBSTRATE



5" MIN NOTCHED PATCH REQUIRED
AT ALL CORNERS

MAXIMUM WARRANTY: 30 YEARS

Firestone
BUILDING PRODUCTS
NOBODY COVERS YOU BETTER.™
www.firestonebpcoo.com

ULTRAFFLASH™
ASPHALT SYSTEMS

PENETRATION POCKET
ACCEPTABLE SYSTEMS: MODIFIED BITUMEN

ISSUE/REVISION
DATE: 06/20/2016
NOT TO SCALE

DETAIL NO.
MB-P-8