

ROOF EDGE
 THE FIRST CAP SHEET MUST RUN PARALLEL TO ROOF EDGE
 ROOF EDGE
 FIGURE 1

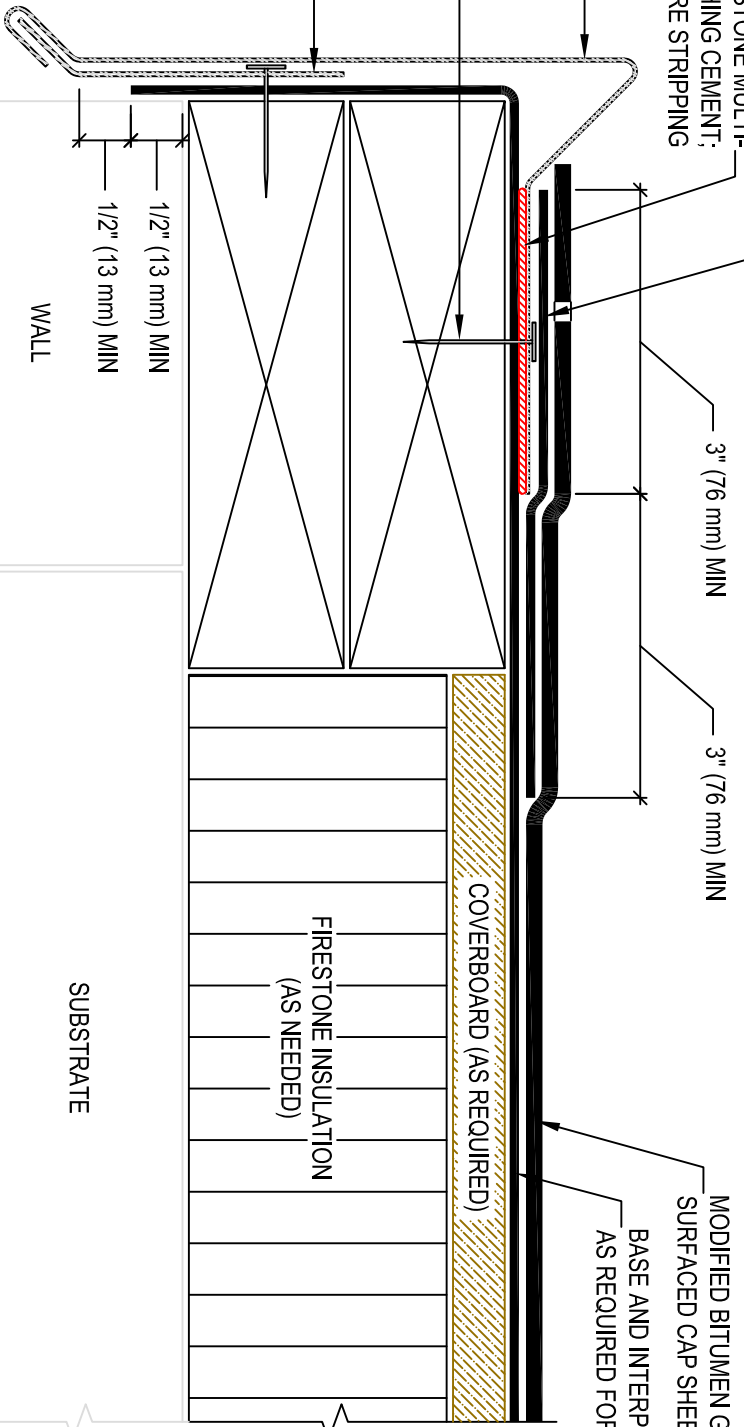
INTERPLY REQUIRED FOR 15 & 20 YEAR WARRANTY SYSTEMS

SHEET METAL DRIP EDGE OR "GRAVEL STOP" SET IN FIRESTONE MULTI-PURPOSE MB FLASHING CEMENT; PRIME FLANGE BEFORE STRIPPING

"GRAVEL STOP" REQUIRED WITH GRAVEL SURFACED SYSTEMS

FASTENERS AT APPROX. 3" (76 mm) O.C. STAGGERED

CONTINUOUS CLEAT FASTEN 6" (152 mm) O.C.



- NOTES:
1. REFER TO FIRESTONE WEBSITE FOR MOST CURRENT INFORMATION.
 2. THIS DETAIL SHOULD BE USED ONLY WHERE THE DECK IS SUPPORTED BY THE OUTSIDE WALL.
 3. WOOD NAILERS MUST BE INSTALLED WITH SUITABLE FASTENERS TO MEET APPLICABLE BUILDING CODES (200 LBS PER LINEAR FOOT MIN IN ANY GIVEN DIRECTION).
 4. ALL SHEET METAL IS TO BE INSTALLED PER SMACNA GUIDELINES.
 5. GRANULES MUST BE EMBEDDED WHEN THERMALLY FUSING GRANULE SURFACED CAP SHEET.

MODIFIED BITUMEN GRANULE SURFACED CAP SHEET
 BASE AND INTERPLY SHEETS AS REQUIRED FOR DESIRED WARRANTY

COVERBOARD (AS REQUIRED)

FIRESTONE INSULATION (AS NEEDED)

SUBSTRATE

WALL

MAXIMUM WARRANTY: 20 YEARS